



An Institute for Civil Services

IAS TOPPER'S TEST COPY

SACHIN RAHAR

AIR 291

CSE 2023

ETHICS



8448496262



www iasscore.in

ETHICS, INTEGRITY AND APTITUDE

Time Allowed: 3 Hrs.

Max. Marks: 250

Q.	Marks	Instructions to Candidate	
1.		<ul style="list-style-type: none"> There are 19 questions. All questions are compulsory. The number of marks carried by a question is indicated against it. Answers to questions no. 1 to 13 should be in 150 words, whereas answers to questions no. 14 to 19 should be in 250 words. Keep the word limit indicated in the questions in mind. Answers must be written within the space provided. Any page or portion of the page left blank in the Question-cum-Answer Booklet must be clearly struck off. 	
2.			
3.			
4.			
5.			
6.			
7.			
8.			
9.			
10.			
11.			
12.		Name:	SACHIN RAHAR
13.		Roll No.:	
14.		Mobile No.:	
15.		Date:	
16.		Signature:	<i>Sachin</i>
17.		Mode of Exam:	English
18.			
19.			
Total Marks			

Mention any doubt or query that you have regarding your copy for our mentors/ evaluators

1 - Good contact Sachin.

2 - Need to make it more self-explanatory.

3 - In Section A - ~~in~~ few context analysis is required.

1. Evaluation Date _____

2. Evaluator's Signature _____

[Signature]

REMARKS

GS SCORE

MTS-3214

ETHICS, INTEGRITY AND ATTITUDE

1. Subordinate to Command

2. Subordinate to Command

3. Subordinate to Command

4. Subordinate to Command

5. Subordinate to Command

6. Subordinate to Command

7. Subordinate to Command

8. Subordinate to Command

9. Subordinate to Command

10. Subordinate to Command

11. Subordinate to Command

12. Subordinate to Command

13. Subordinate to Command

14. Subordinate to Command

15. Subordinate to Command

16. Subordinate to Command

17. Subordinate to Command

18. Subordinate to Command

19. Subordinate to Command

20. Subordinate to Command

21. Subordinate to Command

22. Subordinate to Command

Handwritten signature and date: 10/10/10

ETHICS, INTEGRITY AND APTITUDE

Time Allowed: 3 Hrs.

Max. Marks: 250

Section - A

1. Today, the world is going through a moral decline manifested in wars, civil strife, environmental crisis, and many more. Can ethics help in a moral renewal of the world? If so, then why it is not visible in action? Analyse. *war ethics* *self interest ch*
2. The difference between law and ethics is "knowing the difference between what you have a right to do and what is the right thing to do". In light of this statement, bring out the relationship between law and ethics. *II*
3. Consider the following quotations and analyse the statement given below: *morality*
 - (a) Einstein- "Education is what remains after one has forgotten what one has learned in school".
 - (b) Aristotle- "Educating the mind without educating the heart is no education at all". *morality*

In the light of the above quotes, describe the role of moral education in the ethical development of the student. *✓*
4. "Future is not some place we are going to, (but one we are creating) The paths to future are not found, but to be made". How ethics makes us choose our future wisely? Give examples in support of your arguments. *good media friend* *misuse of technology*
5. Relativity applies to physics, not ethics. Explain. *→ ontological* *shaping & control*
6. Moral and ethical standards of a society define "who we are". What is the role of social values and social control in making an ethical society and citizenry? It is felt that social values and control have weakened in recent times. Why? *- family & social media*
7. Is it ever justified to prioritize financial gain over ethical considerations in business decision-making? Why or why not? *Δ*
8. Examine the contributions of Confucius to moral philosophy. Discuss his concept of ren (benevolence) and its role in Confucian ethics, particularly in relation to the cultivation of moral character. *→ decision making.*
9. Reflect on the practical implications of moral thinkers across different cultures and time periods. How can their ideas be adapted and applied in contemporary diverse societies to address moral challenges and promote ethical decision-making? *Toshen* *→ little impact of situations.*
10. How can Immanuel Kant's concept of universalizability be applied to real-life ethical dilemmas? What implications does this have for personal integrity and trustworthiness? *→ trust ✓*
11. Reflect on the practical implications of Jean-Paul Sartre's (existentialist ethics) particularly in terms of personal authenticity and responsibility. How can individuals make meaningful choices and take ownership of their actions in their personal and professional lives?
12. In the context of autonomous vehicles, who should bear the responsibility in situations where an accident is unavoidable? Should the programming prioritize the safety of the passengers or the greater good by minimizing overall harm, even if it means sacrificing the passengers? Assess. *owner/company.* *→ both.*

13. Is it ethically justifiable for governments to use surveillance technologies, such as facial recognition or mass surveillance programs, in the interest of national security? How can the balance between security and individual privacy be maintained? → *proportionality* *ethical* *greater good* *personal and non-personal data*

Section - B

14. You are a senior civil engineer overseeing a highly critical and time-sensitive road project. The project contractor, who initially demonstrated commendable work ethics and quality standards, suddenly faces a major setback in his personal life. His only son was involved in a severe accident, leaving him emotionally distressed and unable to fully dedicate himself to the project. As a result, the project experiences significant delays and a noticeable decline in the quality of work.

Complicating matters further, your subordinates, driven by strict adherence to timelines and quality standards, demand immediate action against the contractor. They argue that his personal issues should not be allowed to compromise the project's overall success, and they expect you to enforce strict consequences.

However, you are torn between understanding the contractor's difficult circumstances and the project's pressing demands. You recognize the contractor's prior commitment and the unforeseen challenges he is facing. Additionally, the contractor's team supports him and believes in his ability to deliver outstanding results under normal circumstances.

In this complex scenario, what are the issues in front of you in handling this project. Evaluate various options.

15. You are a highly respected doctor working in a government hospital which is renowned for its medical expertise. One of your close friends recently married into a wealthy and influential family with deep-rooted traditional beliefs. As you become acquainted with the family, you discover that they hold firm gender preferences, favoring a male child to continue their lineage and inherit their wealth.

One day, your friend confides in you, expressing her deep fear and anxiety. She discloses that her in-laws are pressuring her to conceive a male child and have resorted to unethical practices to ensure their desire is fulfilled. They approach you, using their influence and connections, to seek your assistance in determining the sex of the fetus and requesting an abortion if it is a girl. The family's power extends to the Health Ministry, and they make it clear that they can manipulate the system to protect their interests.

This complex situation intensifies as you grapple with multiple ethical dilemmas. On one hand, you are bound by your professional responsibilities and the principles of medical ethics that prohibit gender-based discrimination and prioritize the well-being of both the mother and the unborn child. On the other hand, your personal relationship with your friend complicates matters, as your actions could potentially strain or jeopardize the friendship.

Moreover, you find yourself questioning the systemic issues perpetuating gender bias and the abuse of power. The involvement of the influential family and the Health Ministry raises concerns about corruption, the misuse of authority, and the impact on society at large.

In this heightened complexity, you must carefully navigate between your professional integrity, moral values, friendship, and the potential consequences of challenging the powerful forces at play. The decision you make not only impacts the lives of the individuals involved but also reflects your stance on upholding ethical principles and advocating for justice in the face of societal pressures.

This complex scenario demands a thoughtful analysis of the multifaceted ethical considerations and requires you to weigh the potential outcomes, both immediate and long-term, as you determine the course of action that aligns with your values and professional responsibilities.

In the given context, answer the following questions:

- How might the doctor assess the potential long-term psychological and emotional consequences for the friend if she were to undergo an abortion against her will?
- What legal and professional obligations does the doctor have in terms of patient's confidentiality and protecting the friend's autonomy in making decisions about her own body and pregnancy?

- (c) How could the doctor navigate the power dynamics between the wealthy and influential in-laws, the Health Minister, and their own professional integrity?
 - (d) What are the potential risks and benefits of the doctor seeking support or guidance from professional medical organizations or ethics committees in handling this complex situation?
 - (e) How could the doctor engage with advocacy groups, non-governmental organizations, or legal authorities to address the larger systemic issues of gender-based discrimination and misuse of power in healthcare?
16. You are the CEO of a large government healthcare organization responsible for providing medical services to a wide range of patients. One day, a whistleblower from within your organization approaches you with evidence of a widespread corruption scheme. The whistleblower reveals that a group of doctors and administrators are colluding with pharmaceutical companies to prescribe unnecessary medications and medical procedures in exchange for bribes. This unethical practice has led to inflated healthcare costs, compromised patient care, and financial gain for the involved individuals.

As you delve deeper into the investigation, you discover that this corruption scheme extends beyond just a few individuals. It involves influential doctors, administrators, and even higher-level officials within the healthcare system. Additionally, you come to realize that the whistleblower's life is at risk, as those involved in the corruption are powerful and have the means to silence anyone who threatens to expose them.

Your goals are twofold: first, to protect the whistleblower and ensure their safety, and second, to eradicate the corruption within the organization and restore public trust in the healthcare system. However, you face numerous challenges, including potential backlash from those involved in the corruption, legal complexities, and the need to maintain the organization's day-to-day operations while undertaking this massive reform.

As the CEO, you must consider various ethical dilemmas and strategic decisions, such as how to handle the evidence, whether to involve law enforcement agencies or government oversight bodies, and how to foster a culture of transparency and integrity within the organization. You must navigate the intricate web of power dynamics, protect the rights and well-being of the whistleblower, and devise a comprehensive plan to address the systemic corruption issues.

This complex case requires you to balance the pursuit of justice with the practical considerations of managing a large organization and mitigating potential risks. It challenges you to think critically about ethical leadership, organizational change, and the broader implications of corruption on public trust and healthcare outcomes.

There are certain questions in this context. These tough questions highlight the complex ethical and strategic considerations that must be addressed in managing the investigation, reform, and long-term integrity of the organization in the face of widespread corruption. Answer the following questions:

- (a) What steps will you take to ensure the safety and protection of the whistleblower in the face of potential retaliation from powerful individuals involved in the corruption scheme?
- (b) How will you navigate the legal complexities surrounding the investigation, considering the involvement of influential doctors, administrators, and higher-level officials within the healthcare system?
- (c) How will you address the challenge of maintaining public trust in the healthcare system while exposing the widespread corruption, ensuring that the public understands that the actions of a few individuals do not reflect the integrity of the entire organization?
- (d) How will you handle the potential resistance and pushback from individuals implicated in the corruption scheme, including navigating political pressures and maintaining the momentum for change despite potential obstacles?
- (e) What measures will you take to ensure transparency, accountability, and ethical behavior throughout the organization's hierarchy, fostering a culture that actively discourages corruption and encourages reporting of any unethical practices?

17. You are a highly talented and ambitious sportsperson, recognized for your exceptional skills and passion for the game. However, you find yourself entangled in a complex web of power dynamics and moral dilemmas. Here is the reframed and more complex case:

You are a key player in a renowned university basketball team, aiming for victory in an upcoming championship. Despite your stellar performance and dedication, you have always felt a sense of unease regarding the coach's behaviour. Rumours circulate that the coach engages in unethical practices, manipulating the selection process to favour certain players who maintain close personal ties with influential individuals. In an attempt to uncover the truth and ensure fair play, you decide to discreetly investigate the coach's actions. As you delve deeper into your inquiry, you gather compelling evidence of favouritism, corruption, and unfair treatment within the team. The more you uncover, the more you realize the magnitude of the problem and the potential consequences if exposed.

Simultaneously, you receive an unexpected offer from a renowned professional team scouting for promising talent. This opportunity has the potential to launch your career and fulfil your dreams, but it comes with a catch. The influential figures behind the professional team have a close association with the coach, raising suspicions of potential collusion and an unfair selection process at the professional level as well.

While grappling with these complex circumstances, a shocking incident occurs. During a crucial practice session, a teammate sustains a severe injury due to the coach's negligence. The teammate, fearing reprisal from the coach, implores you to remain silent and protect their place in the team. This places an enormous burden on your conscience, as you question whether to prioritize loyalty to your teammate or expose the coach's wrongdoing to ensure justice and a safer environment for all team members.

Now faced with multiple intertwined dilemmas, what are the issues you face in this case and how will you address those?

18. You are the director of a research institute known for its ground breaking scientific discoveries. Recently, a controversy has erupted within the institute regarding the use of experimental animals in research. A group of passionate animal rights activists, supported by influential public figures, has launched a campaign against the institute, demanding an immediate end to all animal experimentation.

On the other hand, the institute's scientists argue that animal research is crucial for advancing medical knowledge and finding cures for life-threatening diseases. They emphasize the strict ethical guidelines and regulations they follow to ensure the well-being of the animals involved in the studies.

The controversy has sparked intense debates within the scientific community, with some researchers advocating for alternative methods such as in vitro testing, while others believe that animal models are irreplaceable for certain types of research.

The situation becomes more complex as the media gets involved, sensationalizing the issue and polarizing public opinion. Pressure mounts on you as the director to address the concerns raised by the activists, maintain the institute's reputation, and ensure the continuation of valuable research.

In this complex scenario, the following questions can be considered to answer. Remember, this complex case raises various ethical, scientific, and societal challenges that require careful consideration and strategic decision-making to find a balanced and sustainable solution.

- What steps can be taken to engage in meaningful dialogue with the animal rights activists and address their concerns while highlighting the scientific importance of animal research?
- How can the institute balance its commitment to scientific progress with ethical considerations and the growing demand for alternative testing methods?
- How can the institute ensure the well-being and mental health of its researchers who may face backlash and public scrutiny due to their involvement in animal experimentation?
- How can the institute navigate the legal and regulatory landscape surrounding animal experimentation and stay compliant with existing laws while adapting to changing societal expectations?

19. You are the principal of a prestigious high school known for its diverse student population. A conflict has arisen between two student groups, one representing the mainstream students and the other representing the minority students, particularly those from marginalized backgrounds. The conflict started with a disagreement over cultural practices and has now escalated to verbal confrontations and threats between the groups.

The tension has spilled over into the school premises, with graffiti and defacement of school property. Both groups have taken to social media to express their grievances and rally support, further polarizing the situation. The school administration has attempted to mediate and resolve the conflict through discussions and counselling sessions, but the efforts have not yielded satisfactory results. Now, as the principal, you are faced with the challenge of addressing the situation and restoring a peaceful and inclusive environment for all students. You have limited options, evaluate each with their own merits and demerits.



Section - A

- Q1. Today, the world is going through a moral decline manifested in (wars, civil strife, environmental crisis, and many more) Can ethics help in a moral renewal of the world? If so, then why it is not visible in action? Analyse. (10 Marks) (150 Words)

World has always seen ebbs and flow of its consequences of its actions.

Today, we are plagued with Ukrain War, Sudan Civil War, rising temperature. However inaction still prevails.

How ethics can help-

1. Justice - It can guide us on the path of justice. #①

Eg: Environmental justice.

2. Humanity first
Eg: Deontological Ethics. #②

3. Social Welfare - To believe in greater good

Remarks

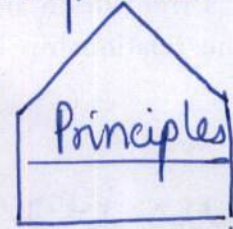
4. Just War Ethics

To control civil wars.

Last Resort

Diplomacy

Proportionality

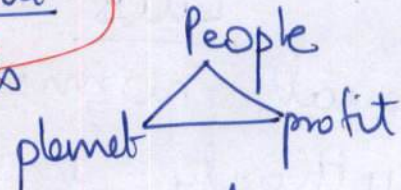


Means <=> end

Int. Laws

5. Sustainable Development

To avert ~~climate~~ ~~crisis~~



6. Duty Ethics to develop shared prosperity.

Reasons for its non-visibility in Action -

1. Unlimited self interest - Profits > sustainable
2. Moral degeneration
3. Poor realisation of duty → Eg: rising corruption.
4. Means are not considered to be important
Eg: low vigilantism.

Following Ethics help us in realising 'Vasudha kutumbkam'.

(2)

Feedback (for office use only)

1. Objectivity

2. Content

3. Articulation: ✓✓

Remarks

- you are just copying few points
- where is explanation.
- where is "why" factor in your 2nd part of answer.

- Q2. The difference between law and ethics is "knowing the difference between what you have a right to do and what is the right thing to do". In light of this statement, bring out the relationship between law and ethics. (10 Marks) (150 Words)

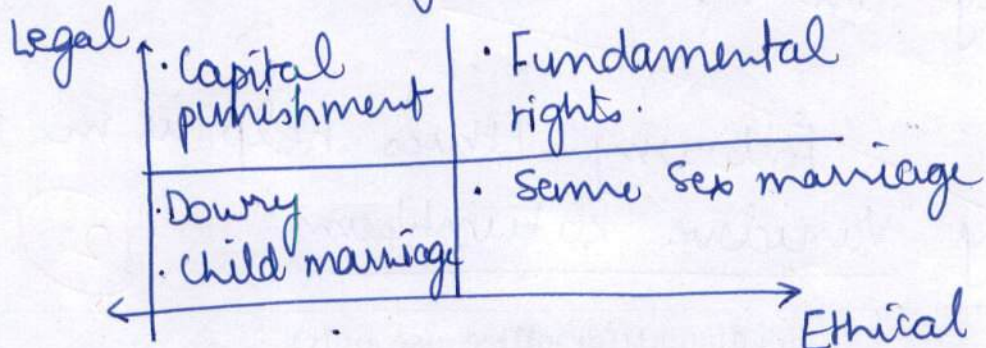
Ethics begin where law ends

Laws are codified form of social norms imposed by some authority and there is prescribed punishment for non-adherence.

Ethics on the other hand are socially imposed but have no formal codification or imposition. There is no punishment.

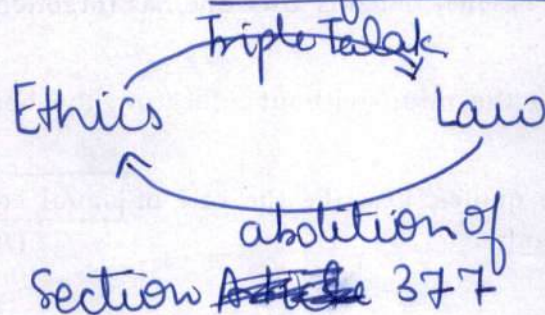
The relationship is as follows.

1. In terms legality and ethical



Remarks

2. In terms of reinforcement.



3. In terms of control

Ethics
↓
Social ostracism

Law
↓
Penal Punishment

4. Evolution → Ethics - social advancement
→ Law - parliamentary procedure.

5. Conflict - leads to evolution.

Eg: Same Sex Marriage.

Therefore, ethics and law are time and space dependent. They both re-inforce each other to make a Just Society.

Feedback (for office use only)

1. Objectivity

2. Content == ?

3. Articulation:

Remarks

} Schin - you have good content.
Bony clarity in explanation & make your answer self explanatory.

Q3. Consider the following quotations and analyse the statement given below:

- (a) Einstein- "Education is what remains after one has forgotten what one has learned in school".
- (b) Aristotle- "Educating the mind without educating the heart is no education at all".

In the light of the above quotes, describe the role of moral education in the ethical development of the student.
(10 Marks) (150 Words)

Briefly
define the
meaning of
moral education.

Education without morality is like producing clever devils.

Moral Education - It is providing knowledge and wisdom to objectively deciding right or wrong. Providing evaluative tools to students.

Eg: Ethics Curriculum of Delhi Schools

Role of Moral Education -

1. Knowledge of right course of action
Eg: Yudhishthira learnt Dharma from Guru Drona
2. Attitude - Development of Ethical attitude.

Remarks

3. Sense of duty:-

Eg:- Pame Armstrong - Miracle Man of Manipur.

4. Self-confidence is instilled

Eg:- Angulimal and Buddha.

5. Helps in Building 'Just' Society.

Eg:- APJ Abdul Kalam on Education.

Ways to inculcate Moral Education

1. Ethics Curriculum

2. Plays / Nukkad Natak.

3. Community help drives

Eg:- NCC

4. Enforcement through stories

Eg:- Stories of Gandhi Ji

5. Sports as a tool.

Thus, moral education would help in developing 'Amrit kal' Generation.

Feedback (for office use only)

1. Objectivity	2. Content
3. Articulation:	

Remarks

(4)

- Q4. "Future is not some place we are going to, but one we are creating. The paths to future are not found, but to be made". How ethics makes us choose our future wisely? Give examples in support of your arguments. (10 Marks) (150 Words)

Ethics are evaluative tools that help us in analysing right or wrong. These promote ethical decision-making in present. Present directly controls future thus they help us in building a just future.

Ethics help in choosing our future wisely. →

1. Avoid Ethical Dilemma

Eg: Aguma's Dilemma resolved.

2. Solve Confrontations ÷

Eg: India gave control of Bangladesh to its govt.

3. Choice between self-interest and social interest made easy

Eg: Nadia Murad - Nobel Peace Prize

4. Promoting future useful to society.
Eg: Development of ethical A.I.
5. Allowing us to use our powers in a responsible manner
Eg: Gandhi Ji's Talisman
6. Promoting stable relationship.
Eg: Virtue Ethics
7. Future at various stages
 - a. Individual - Dilemma resolved.
 - b. Society - Tolerance
 - c. Nation - Just War.
8. Future for various occupations
 - a. Leaders - maintain harmony
 - b. Business - Environment > profit

Thus, ethical development could help us in building peaceful and a better place to live in.

Feedback (for office use only)

1. Objectivity

2. Content

3. Articulation:

Remarks

(4)

Q5. Relativity applies to physics, not ethics. Explain.

(10 Marks) (150 Words)

The above statement reflects the objective view of ethics. Here, the role of circumstances is minimal. Eg: killing is bad under any circumstances.

Thus, the statement promotes universalisation of deontological ethics. Means become more important than the end. Therefore, the ethical conduct becomes independent of the situations.

Objective view of Ethics

1. Universal in Nature - No cultural impact.

Eg: Lying is bad.

2. Ethics lie in the action itself and not the consequences.

Remarks

3. No interpretation of any ethical principles

4. Intention and consequences are not important.

Objective	Subjective
Ethics	Ethics

Subjective Views

1. End is equally important.

Eg: Krishna urges Arjuna to kill.

2. Con Circumstances as important.

Eg: Lying to save someone.

3. Interpretation depending upon time and place.

Eg: De-criminalisation of Homosexuality.

4. Intention as basis of all modern justice systems.

you need to arrive to conclusion after doing all
Therefore, Ethics are both objective and subjective in nature. Thus, one must be taught ethics to judge the values.

Feedback (for office use only)

1. Objectivity

2. Content

3. Articulation:

Remarks

- Good understanding.
- But such questions demand good analysis rather than only few points.
②

Q6. Moral and ethical standards of a society define "who we are". What is the role of social values and social control in making an ethical society and citizenry? It is felt that social values and control have weakened in recent times. Why?

(10 Marks) (150 Words)

Morals and Ethical standards provide a standard to judge the actions in a just and fair manner. Therefore, it deals with defining the society in present scenario.

Role of social values and social control

1. Resolving social ethical dilemma

Eg: Vishwasathan, a teacher in Maharashtra donating 50% of his salary for Education.

2. Promoting ethical conduct

Eg: Promoting familial values

3. Social control as a means of correcting deviant behaviours

Eg: Social Ostracism

4. Establishing moral society

Eg: Ethics >> Law.

5. Promoting active citizenry

Remarks

6. Maintenance of Law and Order

Reasons for weakening of social values and control

1. Weakening of familial control

Eg: Joint Family $\xrightarrow{\text{social control}}$ Nuclear Family

2. Rise in individualism

Eg: due to globalisation = H.W. 2.

3. Social Media

Eg: Morals comes on internet.

4. Difficult work-life balance

Eg: Time for social schooling declining

5. Poor focus on promoting ethics

Eg: 'Win at any cost' attitude

Therefore, it is important to inculcate ethical conduct at a very young age. ~~Children~~ are the future of a nation.

Feedback (for office use only)

1. Objectivity

2. Content

3. Articulation:

Remarks

4

Q7. Is it ever justified to prioritize financial gain over ethical considerations in business decision-making? (Why or why not?) (10 Marks) (150 Words)

Business decision-making is a very complex process as businesses has a responsibility to shareholders for profit but at the same time sustainability must be ensured.

Justification of financial gains over ethical considerations.

1. Unlimited wealth gains.
2. Promoting interest of shareholder.
3. Business expansion.
4. Competitive edge.

↓ ↓ ↓ leads to

1. Erosion of trust.
2. Harm to the planet.
3. Brand Image erosion.
4. Ethical erosion.

Remarks

Therefore, it is never justified to prioritize financial gains over ethical consideration.

Benefits of Ethical Business

1. Building trust amongst consumers

Eg: Many startups like GreenCo.

2. Sustainable development.

3. Trusteeship of Gandhi



4. Brand Recognition

5. Advantages as provided by the Government Eg: Social Stock Exchange

Ethical business is sine-qua-non to 'sustainable economical development' and making India a 'Vikshit Bharat'.

Feedback (for office use only)

1. Objectivity

2. Content

3. Articulation:

Remarks

32

- Q8. Examine the contributions of Confucius to moral philosophy. Discuss his concept of ren (benevolence) and its role in Confucian ethics, particularly in relation to the cultivation of moral character. (10 Marks) (150 Words)

Confucius is a Chinese thinker who promoted ren (benevolence), love and harmony.

Concept of Benevolence | Ren |

1. It means that social welfare and harmony must be primary goal of an individual.
2. It represent various values of kindness, harmony, compassion and empathy.

Role in Confucius Ethics.

1. Primary value that every human must cultivate.
2. Forms the basis of ethical conduct.
3. Promotion of social welfare.

Focus on imp. Relationship in

Remarks

Cultivation of moral character and Ren.

1. Ren forms the basis of all other moral values.
2. It must be cultivated through:
self actualisation, education and reflection.

Relevance of Ren.

1. Promoting Harmony
2. Peace instead of war.
3. Tolerance promoted.
4. Compassionate living.

The Confucius ethics promoted the ethical development in eastern philosophy including Taoism.

Over Stretched.

Feedback (for office use only)

1. Objectivity

2. Content

3. Articulation:

Remarks

Q9. Reflect on the practical implications of moral thinkers across different cultures and time periods. How can their ideas be adapted and applied in contemporary diverse societies to address moral challenges and promote ethical decision-making?

(10 Marks) (150 Words)

Moral thinkers provide ~~a way~~ us to develop a way to resolve conflicts arising in individual's life.

Eg: Madhyam May of Buddha

Their teachings could be modified and applied to any time making them timeless.

Addressing present moral challenges

1. Unlimited amassing wealth -
Gandhi Ji's trusteeship theory.

2. Sustainable development.

Eg: Jainism which considers earth as a living being.

3. War and Civil strife

Eg: Augustus's 'Just War' Ethics.

4. Communal dis-harmony.

Eg: Taoism.

Remarks

5. Self Interest taking precedence
Compassion as taught by Mother Teresa.
6. Geopolitical Tensions - Panchsheel
of Nehru.
7. Failures and Competition - Nishkam
karma in Gita
8. Rising global moral degeneration
Kantian deontological viewpoint.
9. Promotion of Social Welfare.
Tagore's Universal Humanism.
10. Social Media Dangers.
Ethical considerations in Swami
Vivekananda's ideas.

Therefore, applying ethical
conduct based on moral thinkers on
present problems could help in resolving
dilemmas effectively.

Feedback (for office use only)

1. Objectivity

2. Content

3. Articulation:

Remarks

*you have given
content.
little more
in my
view.*

Q10. How can Immanuel Kant's concept of universalizability be applied to real-life ethical dilemmas? What implications does this have for personal integrity and trustworthiness? (10 Marks) (150 Words)

Immanuel Kant in his book 'Pure Critique of Reason' talks about deontological ethics and categorical imperative.

It is based on duty ethics and doing the just thing for the sake of doing moral thing and not to ~~take~~^{achieve} some predetermined consequences.

Further the concept of universalisation talks about expanding ethics to space and time. Performing an action with ethics that transcend boundaries of space and time.

Applying Universalisation to real-life ethical dilemma -

1. Profit v/s Environment. Universalisation would explain the dangers of amassing wealth, if everyone does it eternally.

Remarks

Thus, consequences of climate change would help us to arrive us at sustainability.

2. Self v/s Society - If everyone promotes self then, no one would be able to promote self. However, if everyone follows societal welfare, it promotes everyone's benefit.

Implication on personal ~~and~~ integrity and trustworthiness

Integrity - promotes as it makes actions consistent.
 → synergy b/w behaviour and actions.
 adherence of high moral standards.

Trustworthiness - promotes predictability of actions
 → consistent moral behaviour.
 actions could be judged.

Therefore, the concept of universality is an important tool in solving ethical dilemmas.

Feedback (for office use only)

1. Objectivity

2. Content

3. Articulation:

Remarks

4/2 ✓

Q11. Reflect on the practical implications of Jean-Paul Sartre's existentialist ethics, particularly in terms of personal authenticity and responsibility. How can individuals make meaningful choices and take ownership of their actions in their personal and professional lives? (10 Marks) (150 Words)

Existence precedes essence

Jean-Paul Sartre's existentialist ethics display the subjective nature of

ethics. It shows how an individual interpretation of various ethical principles give rise to different actions.

Therefore, he gives importance to individual history and interpretation.

In ensuring personal authenticity, he gives preference to precedence of existence before the interpretation. Thus, ethics display personal authenticity. Only an ethical individual can interpret situations ethically.

It promotes responsibility for

Remarks

one's actions by putting forth the idea that ethics is not independent of an individual.

Individuals can make meaningful choices in the following ways:-

1. Promoting ethical interpretation.
Eg: Gandhi and doctrine of non-violence
2. Development of ethical understanding
Eg: Winston Churchill talks about moral education

Individuals can take ownership:-

1. Attaching oneself to its actions.
Eg: We are what we do.
2. Responsible action

Satru's philosophy is widely promoted in cultural ethics.

Feedback (for office use only)

1. Objectivity

2. Content

3. Articulation:

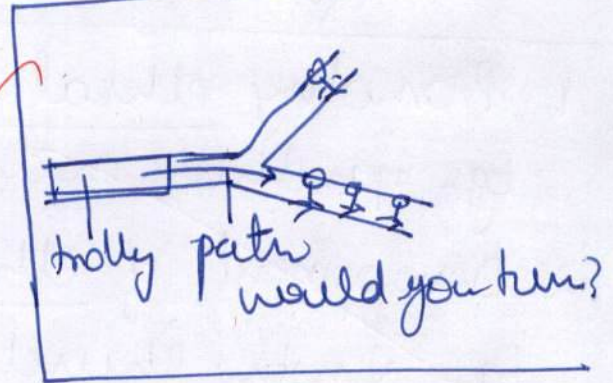
Remarks

Need more clarity in explanation, I am not able to interpret your text

(2)

Q12. In the context of autonomous vehicles, who should bear the responsibility in situations where an accident is unavoidable? Should the programming prioritize the safety of the passengers or the greater good by minimizing overall harm, even if it means sacrificing the passengers? Assess. (10 Marks) (150 Words)

Autonomous vehicles open a Pandora box of ethical dilemmas. The famous 'trolley problem' comes to reality. Therefore, the answers to every possible consequences is needed urgently.



In my opinion, in a situation where an accident is unavoidable the responsibility must be shared by owner and manufacturer and governments.

However, every situation presents a unique challenge. Thus, the penal provisions be designed to punish the real culprit with an aim to reduce such situations.

Remarks

Here, lies the question of programming prioritize.

Prioritising the owner/passengers -

1. Safety concern.
2. Primary responsibility towards consumer.
3. Business Ethics - to provide safety to consumer.
4. Avoiding fear of autonomous vehicle.

Prioritising overall harm minimisation -

1. Greater Good doctrine / Utilitarian
2. Business ethics to minimise spillage.
3. Social Responsibility.
4. Corporate responsibility.

How this fits in to the damage of lives

Therefore, both passenger safety and safety of others is equally important. Lives can not be traded. Thus, there must be made every effort to avoid any loss.

Feedback (for office use only)

1. Objectivity	2. Content
3. Articulation:	

Remarks

[Handwritten signature]

Q13. Is it ethically justifiable for governments to use surveillance technologies, such as facial recognition or mass surveillance programs, in the interest of national security? How can the balance between security and individual privacy be maintained?

(10 Marks) (150 Words)

There are rising cases of use surveillance technologies by the governments
 Eg: Pegasus used by multiple governments.

Therefore, the question of national security and individual rights is complex. Individuals can not be independent of a nation or vice versa.

Thus, the following things must be adhered while following surveillance technologies.

1. Proportionality - of benefits.
2. Last resort
3. Means $\xleftrightarrow{\text{balance}}$ End
 (surveillance) (peace).
4. Individual rights must be protected.

Therefore, if above conditions are assessed and followed properly, the

Remarks

surveillance could be justified. However, a balance must be maintained between security and individual privacy in the following ways:

1. Distinction of personal and non-personal data.
2. Individual rights must be provided supremacy.
3. Should not curtail freedom of speech.
4. Constructive criticism of the government must not be punished.
5. Private Organisation must not be involved.
6. Oversight must be established.
7. Involvement of Independent arbitrators.

Therefore, the surveillance must be carried out in 'rarest of the rare' scenarios.

Feedback (for office use only)

1. Objectivity

2. Content

3. Articulation:

Remarks

[Handwritten signature and initials]

Section - B

Q14. You are a senior civil engineer overseeing a highly critical and time-sensitive road project. The project contractor, who initially demonstrated commendable work ethics and quality standards, suddenly faces a major setback in his personal life. His only son was involved in a severe accident, leaving him emotionally distressed and unable to fully dedicate himself to the project. As a result, the project experiences significant delays and a noticeable decline in the quality of work.

Complicating matters further, your subordinates, driven by strict adherence to timelines and quality standards, demand immediate action against the contractor. They argue that his personal issues should not be allowed to compromise the project's overall success, and they expect you to enforce strict consequences.

However, you are torn between understanding the contractor's difficult circumstances and the project's pressing demands. You recognize the contractor's prior commitment and the unforeseen challenges he is facing. Additionally, the contractor's team supports him and believes in his ability to deliver outstanding results under normal circumstances.

In this complex scenario, what are the issues in front of you in handling this project. Evaluate various options.

(20 Marks) (250 Words)

The above cases highlights the dilemma between two equally important values 'compassion' and 'public service'

Virtues that would help me in solving the dilemma

1. Objectivity.
2. Professional Ethics.
3. Accountability
4. Decision-Making-unbiased.

Don't have anything to say

Remarks

Issues in front of me.

1. Professional duty v/s Human duty.

<ul style="list-style-type: none"> ↳ social welfare ↳ accountability 	<ul style="list-style-type: none"> ↳ Compassion ↳ Empathy
--	---
2. Responsibility to complete the project.
3. Responsibility towards department juniors.
4. Understanding the nature of human grief and loss
5. Explaining my decision made to various stakeholders.
6. Justice to all stakeholders

Various Options available -

1. Removing the contractor

- Pros
- Timely completion of the project
 - Ensuring accountability

- Cons
- Mental dissonance
 - Loosing of faith of contractor on the system.

2. Keeping the contractor

Pros

- Display of Empathetic behaviour.
- Winning trust

Cons

- Project mismanagement
- displaying weakness in decision making.

Seeing both the options, I would take a mix of both the options ensuring overall ethical justice to all stakeholders.

Thus, I would ask contractor to resign from the project displaying objectivity and commitment to public duty. This would ensure timely completion in future projects.

However, at the same time, I will assist contractor in personal capacity to cope up with his loss. Also, providing him amount for the project work he completed.

Feedback (for office use only)

1. Objectivity

2. Content

3. Articulation:

Remarks

62 } ① case study is all about effective
② Decision making -
objectivity missing

Q15. You are a highly respected doctor working in a government hospital which is renowned for its medical expertise. One of your close friends recently married into a wealthy and influential family with deep-rooted traditional beliefs. As you become acquainted with the family, you discover that they hold firm gender preferences, favoring a male child to continue their lineage and inherit their wealth.

One day, your friend confides in you, expressing her deep fear and anxiety. She discloses that her in-laws are pressuring her to conceive a male child and have resorted to unethical practices to ensure their desire is fulfilled. They approach you, using their influence and connections, to seek your assistance in determining the sex of the fetus and requesting an abortion if it is a girl. The family's power extends to the Health Ministry, and they make it clear that they can manipulate the system to protect their interests.

This complex situation intensifies as you grapple with multiple ethical dilemmas. On one hand, you are bound by your professional responsibilities and the principles of medical ethics that prohibit gender-based discrimination and prioritize the well-being of both the mother and the unborn child. On the other hand, your personal relationship with your friend complicates matters, as your actions could potentially strain or jeopardize the friendship.

Moreover, you find yourself questioning the systemic issues perpetuating gender bias and the abuse of power. The involvement of the influential family and the Health Ministry raises concerns about corruption, the misuse of authority, and the impact on society at large.

In this heightened complexity, you must carefully navigate between your professional integrity, moral values, friendship, and the potential consequences of challenging the powerful forces at play. The decision you make not only impacts the lives of the individuals involved but also reflects your stance on upholding ethical principles and advocating for justice in the face of societal pressures.

This complex scenario demands a thoughtful analysis of the multifaceted ethical considerations and requires you to weigh the potential outcomes, both immediate and long-term, as you determine the course of action that aligns with your values and professional responsibilities.

In the given context, answer the following questions:

- (a) How might the doctor assess the potential long-term psychological and emotional consequences for the friend if she were to undergo an abortion against her will?
- (b) What legal and professional obligations does the doctor have in terms of patient's confidentiality and protecting the friend's autonomy in making decisions about her own body and pregnancy?
- (c) How could the doctor navigate the power dynamics between the wealthy and influential in-laws, the Health Minister, and their own professional integrity?
- (d) What are the potential risks and benefits of the doctor seeking support or guidance from professional medical organizations or ethics committees in handling this complex situation?
- (e) How could the doctor engage with advocacy groups, non-governmental organizations, or legal authorities to address the larger systemic issues of gender-based discrimination and misuse of power in healthcare?

(20 Marks) (250 Words)

Remarks

Despite, strict laws, India see abortion and abandonment of girl child.

① Potential psychological and emotional consequences on the mother of abortion without her consent.

1. Life time trauma
2. Erosion of self-image as control over her body is exhibited by others.
3. Loss of self-confidence as she could not protect her child.
4. Self-Hatred.

② Legal and Professional Obligations

in :-

Protecting Confidentiality

1. Dhamantri's Oath - no disclosure.
2. Code of Conduct for doctors.
3. Ethical Conventional.

Protecting autonomy in decision making and control over female body -

Remarks

1. Article 21. Right to a dignified life.
2. Medical Termination of Pregnancy, 2021. → only the female can file for adoption.
3. Forcible Abortion comes under IPC (female infanticide) *use Munchausen, Carney etc.*
4. Code of Conduct *Detention of in-laws etc.*

© To navigate between the powerful in-laws and health minister, the doctor must act in following manner:-

1. Declining to determine the sex of the fetus child objectively.
2. Reporting the issue under IPC and Female Infanticide Law which prohibits sex determination.
3. Displaying utter integrity in his actions.
4. The actions taken would increase prestige of the doctor helping him professionally.

Remarks

④ Potential Risk in involving ethics committee.

1. ~~the~~ Political Clout of the in-laws.
2. Question over impartiality of the committee.
3. Detrimental to his profession.

Benefits

1. Chances of resolving the dispute
2. Ethical Conduct displayed by the doctor

⑤ The doctor could engage NGOs and other citizen-led groups in the following ways:

1. Reporting the issue.
2. Providing statistics.
3. Assisting NGOs in spreading awareness.
4. Demanding proper implementation of the laws
5. Addressing Gender Bias.

Feedback (for office use only)

1. Objectivity

2. Content

3. Articulation:

Remarks

Q16. You are the CEO of a large government healthcare organization responsible for providing medical services to a wide range of patients. One day, a whistleblower from within your organization approaches you with evidence of a widespread corruption scheme. The whistleblower reveals that a group of doctors and administrators are colluding with pharmaceutical companies to prescribe unnecessary medications and medical procedures in exchange for bribes. This unethical practice has led to inflated healthcare costs, compromised patient care, and financial gain for the involved individuals.

As you delve deeper into the investigation, you discover that this corruption scheme extends beyond just a few individuals. It involves influential doctors, administrators, and even higher-level officials within the healthcare system. Additionally, you come to realize that the whistleblower's life is at risk, as those involved in the corruption are powerful and have the means to silence anyone who threatens to expose them.

Your goals are twofold: first, to protect the whistleblower and ensure their safety, and second, to eradicate the corruption within the organization and restore public trust in the healthcare system. However, you face numerous challenges, including potential backlash from those involved in the corruption, legal complexities, and the need to maintain the organization's day-to-day operations while undertaking this massive reform.

As the CEO, you must consider various ethical dilemmas and strategic decisions, such as how to handle the evidence, whether to involve law enforcement agencies or government oversight bodies, and how to foster a culture of transparency and integrity within the organization. You must navigate the intricate web of power dynamics, protect the rights and well-being of the whistleblower, and devise a comprehensive plan to address the systemic corruption issues.

This complex case requires you to balance the pursuit of justice with the practical considerations of managing a large organization and mitigating potential risks. It challenges you to think critically about ethical leadership, organizational change, and the broader implications of corruption on public trust and healthcare outcomes.

There are certain questions in this context. These tough questions highlight the complex ethical and strategic considerations that must be addressed in managing the investigation, reform, and long-term integrity of the organization in the face of widespread corruption. Answer the following questions:

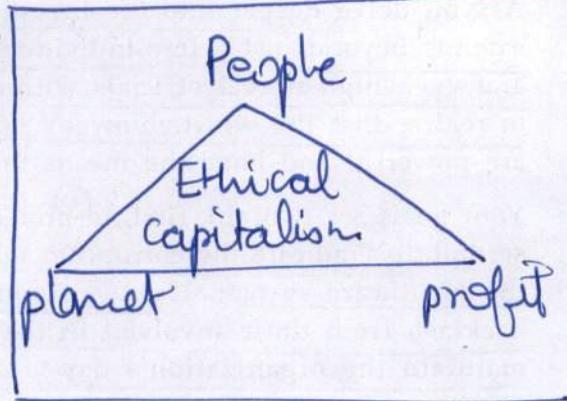
- (a) What steps will you take to ensure the safety and protection of the whistleblower in the face of potential retaliation from powerful individuals involved in the corruption scheme?
- (b) How will you navigate the legal complexities surrounding the investigation, considering the involvement of influential doctors, administrators, and higher-level officials within the healthcare system?
- (c) How will you address the challenge of maintaining public trust in the healthcare system while exposing the widespread corruption, ensuring that the public understands that the actions of a few individuals do not reflect the integrity of the entire organization?
- (d) How will you handle the potential resistance and pushback from individuals implicated in the corruption scheme, including navigating political pressures and maintaining the momentum for change despite potential obstacles?

Remarks

- (e) What measures will you take to ensure transparency, accountability, and ethical behavior throughout the organization's hierarchy, fostering a culture that actively discourages corruption and encourages reporting of any unethical practices?

(20 Marks) (250 Words)

The above case highlights the issue with crony capitalism where social welfare is ignored for personal gains.



a. Protecting the whistleblower

Legal and Institutional Measures

1. Whistleblowers Act - taking measures according to it.
2. Reporting and providing police protection

Personal

3. Taking responsibility personally
4. Providing a safe house

b. Navigating through investigation

Remarks

d. Navigating pushback and political pressure. →

1. Displaying Integrity and Impartiality.
2. Evidence collection - objective and robust.
3. Pin Point accusation to avoid vagueness
4. Ethical conduct in personal life.

e. Future Course of Action :-

1. Code of Conduct. to be framed.
2. Charting out citizen charter.
3. Strict punishment.
4. Rewarding ethical behaviour.
5. Work Culture improvement.
6. Field Visits.

Thus, I would show utmost professional integrity.

Feedback (for office use only)

1. Objectivity

2. Content

3. Articulation:

Remarks

Q17. You are a highly talented and ambitious sportsperson, recognized for your exceptional skills and passion for the game. However, you find yourself entangled in a complex web of power dynamics and moral dilemmas. Here is the reframed and more complex case:

You are a key player in a renowned university basketball team, aiming for victory in an upcoming championship. Despite your stellar performance and dedication, you have always felt a sense of unease regarding the coach's behaviour. Rumours circulate that the coach engages in unethical practices, manipulating the selection process to favour certain players who maintain close personal ties with influential individuals. In an attempt to uncover the truth and ensure fair play, you decide to discreetly investigate the coach's actions. As you delve deeper into your inquiry, you gather compelling evidence of favouritism, corruption, and unfair treatment within the team. The more you uncover, the more you realize the magnitude of the problem and the potential consequences if exposed.

Simultaneously, you receive an unexpected offer from a renowned professional team scouting for promising talent. This opportunity has the potential to launch your career and fulfil your dreams, but it comes with a catch. The influential figures behind the professional team have a close association with the coach, raising suspicions of potential collusion and an unfair selection process at the professional level as well.

While grappling with these complex circumstances, a shocking incident occurs. During a crucial practice session, a teammate sustains a severe injury due to the coach's negligence. The teammate, fearing reprisal from the coach, implores you to remain silent and protect their place in the team. This places an enormous burden on your conscience, as you question whether to prioritize loyalty to your teammate or expose the coach's wrongdoing to ensure justice and a safer environment for all team members.

Now faced with multiple intertwined dilemmas, what are the issues you face in this case and how will you address those?

(20 Marks) (250 Words)

The above case highlights the Sports Ethics. The conduct of the Judge is questionable. However, it comes at an advantage to me giving rise to an ethical dilemma.

Therefore, I must display utmost objectivity, ~~it~~ integrity and must keep the sportsmanship at ~~primary~~

Remarks

Stakeholders Involved -

1. Myself as a Sport person
2. Coach
3. Friend
4. Fellow sportsmen.
5. Society.

Issues

1. Personal gain that coach can provide is in conflict with my duty towards the game.
2. Upholding the trust of a friend and sportsmanship.
3. Avoiding being at disadvantage of losing the contract. The coach has relations with the team.
4. Sense of duty towards society and fellow sportsmen.

Remarks

Resolving the dilemma.

1. Upholding the Sports Ethics. → Impartiality
→ Unbiased
→ Objective.
2. Resolving inner dissonance.
3. Displaying personal and professional integrity.

Using the above 3 principles, I would bring the issue to the notice of the coach and request him to not indulge in any unethical actions. Further, I would report the issue to University management. I would take fellow sportsmen in confidence. Thereafter, I would approach the professional team displaying my commitment to the game in both letter and spirit.

Feedback (for office use only)

1. Objectivity

2. Content

3. Articulation:

Remarks

Q18. You are the director of a research institute known for its ground breaking scientific discoveries. Recently, a controversy has erupted within the institute regarding the use of experimental animals in research. A group of passionate animal rights activists, supported by influential public figures, has launched a campaign against the institute, demanding an immediate end to all animal experimentation.

On the other hand, the institute's scientists argue that animal research is crucial for advancing medical knowledge and finding cures for life-threatening diseases. They emphasize the strict ethical guidelines and regulations they follow to ensure the well-being of the animals involved in the studies.

The controversy has sparked intense debates within the scientific community, with some researchers advocating for alternative methods such as in vitro testing, while others believe that animal models are irreplaceable for certain types of research.

The situation becomes more complex as the media gets involved, sensationalizing the issue and polarizing public opinion. Pressure mounts on you as the director to address the concerns raised by the activists, maintain the institute's reputation, and ensure the continuation of valuable research.

In this complex scenario, the following questions can be considered to answer. Remember, this complex case raises various ethical, scientific, and societal challenges that require careful consideration and strategic decision-making to find a balanced and sustainable solution.

- (a) What steps can be taken to engage in meaningful dialogue with the animal rights activists and address their concerns while highlighting the scientific importance of animal research?
- (b) How can the institute balance its commitment to scientific progress with ethical considerations and the growing demand for alternative testing methods?
- (c) How can the institute ensure the well-being and mental health of its researchers who may face backlash and public scrutiny due to their involvement in animal experimentation?
- (d) How can the institute navigate the legal and regulatory landscape surrounding animal experimentation and stay compliant with existing laws while adapting to changing societal expectations?

(20 Marks) (250 Words)

Remarks

Remarks

Remarks

Remarks

Feedback (for office use only)

1. Objectivity

2. Content

3. Articulation:

Remarks

Q19. You are the principal of a prestigious high school known for its diverse student population. A conflict has arisen between two student groups, one representing the mainstream students and the other representing the minority students, particularly those from marginalized backgrounds. The conflict started with a disagreement over cultural practices and has now escalated to verbal confrontations and threats between the groups.

The tension has spilled over into the school premises, with graffiti and defacement of school property. Both groups have taken to social media to express their grievances and rally support, further polarizing the situation. The school administration has attempted to mediate and resolve the conflict through discussions and counselling sessions, but the efforts have not yielded satisfactory results. Now, as the principal, you are faced with the challenge of addressing the situation and restoring a peaceful and inclusive environment for all students. You have limited options, evaluate each with their own merits and demerits.

(20 Marks) (250 Words)

Remarks

Remarks

Feedback (for office use only)

1. Objectivity

2. Content

3. Articulation:

Remarks