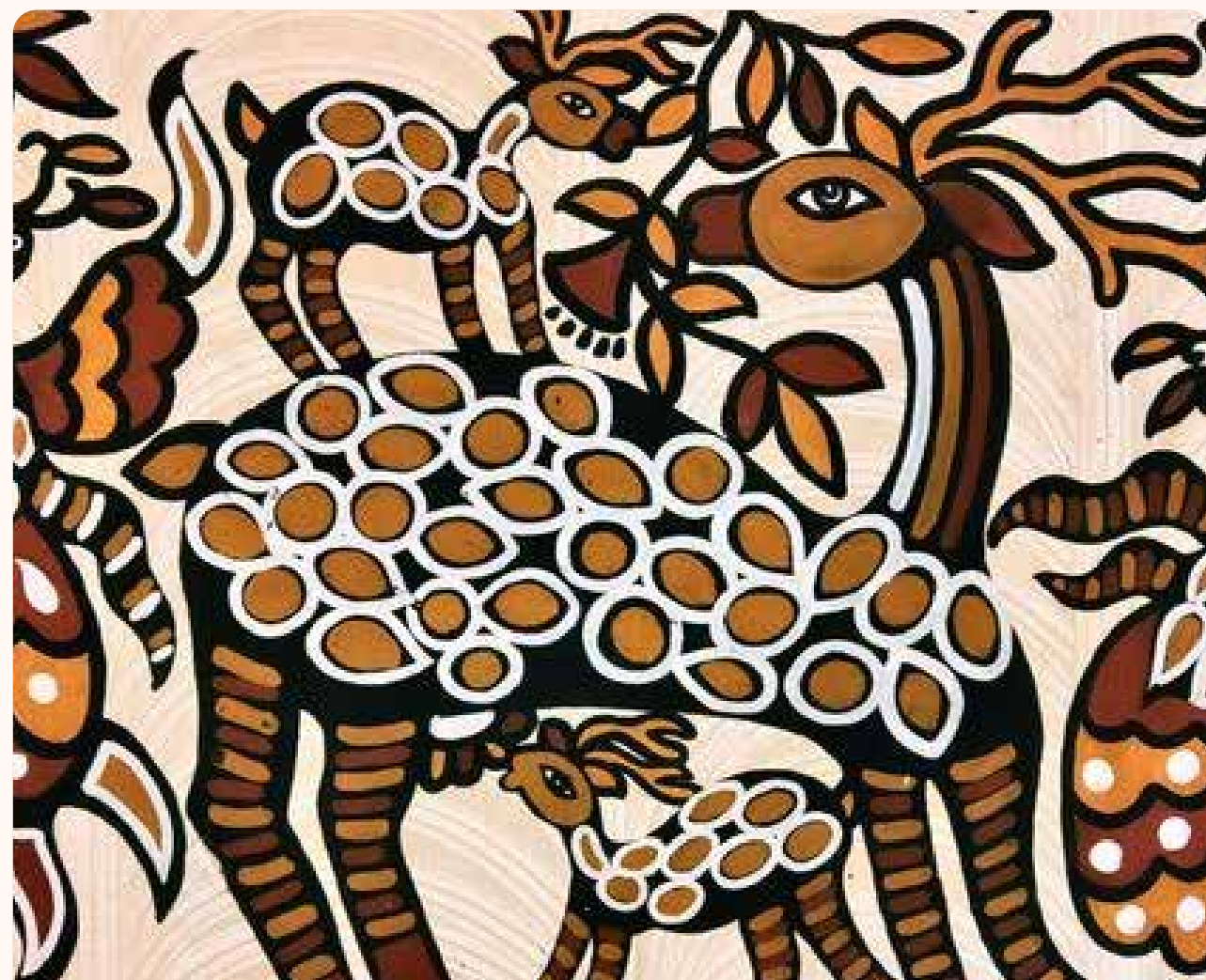


SOHRAI KHOVAR PAINTING



Why in News?



Jharkhand's Sohrai Khovar painting have been given the Geographical Indication (GI) tag in 2020

Features

- ✓ The Sohrai Khovar painting is a traditional and ritualistic mural art being practised by local tribal women in the area of Hazaribagh district of Jharkhand.
- ✓ The painting is primarily being practised only in the district of Hazaribagh. However, in recent years, for promotional purposes, it has been seen in other parts of Jharkhand.
- ✓ It is prepared during local harvest and marriage seasons using local, naturally available soils of different colours in the area.
- ✓ Traditionally painted on the walls of mud houses, they are now seen on other surfaces, too.
- ✓ The style features a profusion of lines, dots, animal figures and plants, often representing religious iconography.
- ✓ In recent years, the walls of important public places in Jharkhand, such as the Birsa Munda Airport in Ranchi, and the Hazaribagh and Tatanagar Railway Stations, among others, have been decorated with these paintings.